



INSTALLATION INSTRUCTIONS

Unitronic 5" Intake System with Air Guide

UH064-INA / UH065-INA

Unitronic recommends that you read through the entire installation instructions prior to beginning the installation to familiarize yourself with the included components, tools required, and procedures involved with the installation.

DISCLAIMER: Unitronic recommends that a Unitronic Authorized Dealer or other qualified and trained professional should perform the installation of this product.

Unitronic Installation Instructions are also available in digital format, if you prefer. Please visit the corresponding product page for a link to download the digital Installation Instructions.
www.getunitronic.com

It is recommended to confirm all parts are present prior to beginning the installation (view next page).

PACKING LIST:

Part Number	Description	Quantity
UH040-IN1	Unitronic 5" Intake Tube	1
UH048-IN2	4" to 5" Coupler for Intake Tube	1
UH013-IN4	Unitronic 7" Air Filter	1
UH008-IN7	DV Port Fitting	1
UH010-IN7	Hex Plug	1
UH009-IN7	N75 Relocation Bracket	1
UH005-HW1	M6x1x16mm SS Screw	1

(continued on next page)



GETUNITRONIC.COM

1

QUESTIONS OR CONCERNS? CALL US TOLL-FREE AT 1.866.341.2447 OR EMAIL US AT INFO@GETUNITRONIC.COM

If purchased with Air Guide (UH065-INA):

Part Number	Description	Quantity
UH057-IN3	Air Duct for 5" Intake, 2.5 TFSI	1
UH050-IN0	Air Guide Hardware Kit	2

For MY17-18 DAZ/DNW, UH066-INA is required and includes:

Part Number	Description	Quantity
UH049-IN2	Silicone DV Adapter for 5" Intake, MY17-18 DAZ/DNW	1

For MY2019+ DAZ/DNW/DXH, UH067-INA is required and includes:

Part Number	Description	Quantity
UH005-IN8	Intake Adapter for MY2019+, 2.5 TFSI EVO DAZA	1
UH050-IN2	Silicone DV Adapter for 5" Intake, MY19+ DAZ/DNW/DXH	1

RECOMMENDED TOOLS NEEDED:

- 2.5mm Allen key
- 4mm Allen Key
- 10mm socket
- 7mm socket
- 8mm socket
- Ratchet
- T25 Torx
- T30 Torx
- Hose clamp pliers

SUPPORTING HARDWARE:

- Unitronic 4" Turbo Inlet*



Stock Intake System Removal

1. Open the engine compartment and remove the engine cover by firmly pulling upward to release the engine cover from the rubber grommets.



2. Using your T25 Torx, remove the two (2) fasteners located on either side of the stock air duct.



3. Using your hose clamp pliers, release tension on the clamp to remove the diverter valve tube.



4. Using your 7mm socket or screwdriver, loosen the clamp holding the factory coupler hose to the airbox.



5. Remove the DSG breather at the front of the airbox, by unhooking it using a flat head screwdriver.
6. By pulling upwards and forwards on the airbox, remove the airbox from the mounting grommets / tabs.
7. Unclip the PCV breather hose from the coil pack harness.

- Using the two tabs on the connection, remove the PCV breather hose from the stock intake tube.



- Locate the T30 Torx fastener on the back of the intake tube bracket, and using your T30 Torx, remove the fastener to free up the intake tube for removal.



- Use hose clamp pliers to release and move the clamp from the Turbo Inlet Elbow, then pull the intake tube loose.



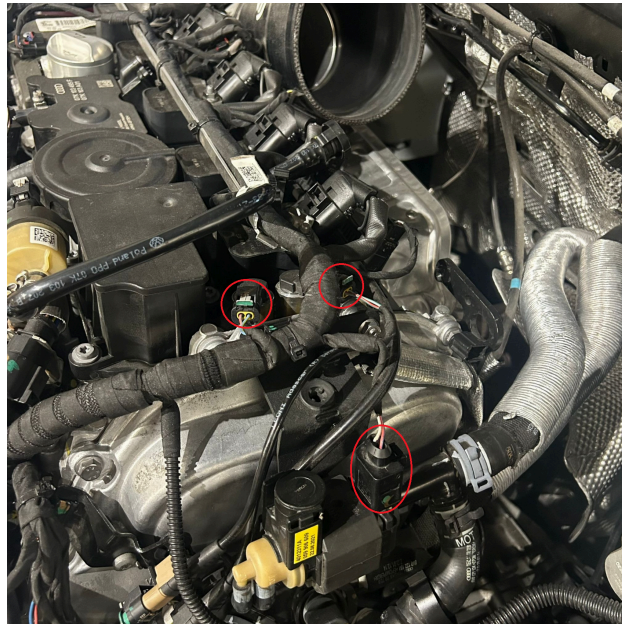
11. Remove the factory intake tube from the engine bay.

Now that you have successfully removed the factory intake, you can proceed to install the Unitronic 5" Intake System:

12. Before installing the Unitronic 5" Intake System, push the rear engine bracket (shown below) toward the rear of the vehicle to ensure the 5" tube has adequate room to move under load. It is also recommended to move the wiring behind the hard line.

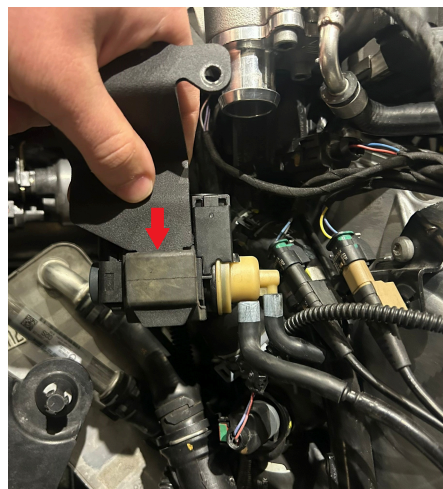


13. Locate the N75 Solenoid Valve bracket in the engine bay and unplug the connector from the N75 as well as the two connectors above the bracket.



14. Unclip the wiring harness from the bracket.

15. Use a 10mm socket to unbolt the factory N75 bracket and lift it out of the engine bay. Once removed, pull the N75 valve downward to separate it from the bracket.



16. Transfer the hardware from the OEM N75 bracket to the Unitronic N75 Relocation Bracket (UH009-IN7).



17. Secure the Unitronic N75 Relocation Bracket (UH009-IN7) using a 10mm socket.

Tip : *It is recommended to install the bracket without the N75 valve attached for now. This maximizes clearance for tightening the intake tube in further procedures.*



18. Locate your Unitronic Inlet Coupler (UH048-IN2) and install it onto the Unitronic 4” Turbo Inlet Elbow with the logo positioned as shown in the following figure. Loosely tighten the hose clamp from the Turbo Inlet Elbow side.



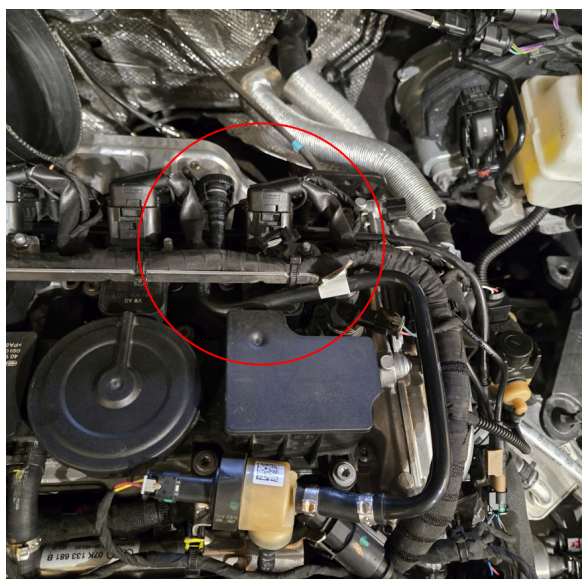
19. Locate the threaded port on the underside of the Unitronic 5” Intake Tube (UH040-IN1) and install the component matching your setup:

- **For OEM DV:** Install the **DV Port Fitting (UH008-IN7)**.
- **For Third-Party DV:** Install the **Hex Plug (UH010-IN7)**.

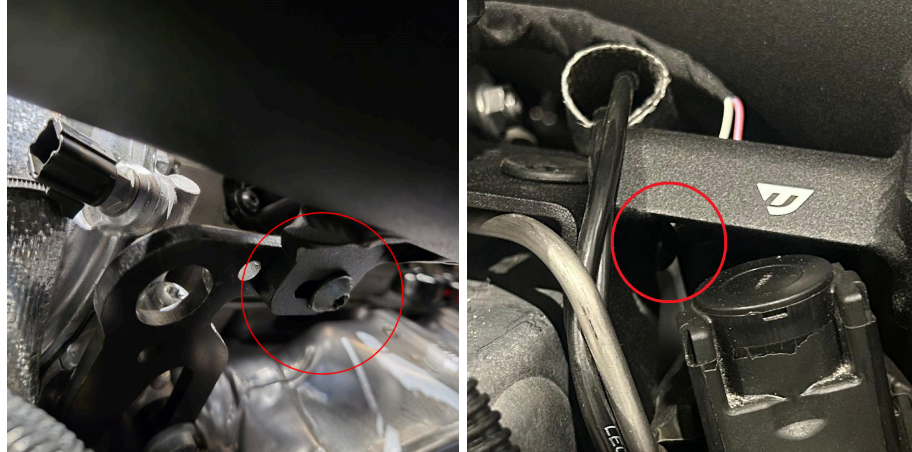
If applicable, connect your silicone DV adapter hose. Position the DV adapter hose so it angles towards the front of the vehicle, then secure it by tightening the provided hose clamp.



20. Reroute the PCV Breather Hose under the harness bracket.



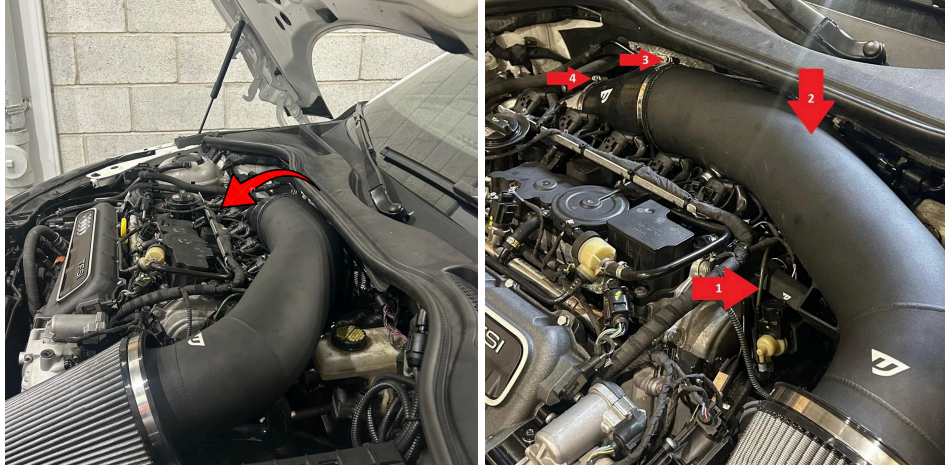
21. Slide the Unitronic 5" Intake Tube (UH040-IN1) into the Unitronic Inlet Coupler (UH048-IN2). Reattach the PCV breather line. **Loosely tighten the rear T30 screw**, the provided **M6 Black SS Screw** (UH005-HW1, requires 4mm Allen key) on the N75 relocation bracket, and the **hose clamps** at the inlet coupler connection.



22. Install the 7" Unitronic Air Filter on the Aluminium Intake System Tube. Orient the metal rod so that it is facing down while in the vehicle.

23. To ensure maximum clearance with the vehicle's brake booster reservoir and the vehicle's hood, rotate the intake tube and coupler assembly counterclockwise to the turbo inlet (see first photo). While keeping the intake assembly clocked counterclockwise, tighten the hardware in the following order (see second photo) :

1. M6 Black SS Screw from the N75 bracket (UH005-HW1, requires 4mm Allen key)
2. Rear intake fastener (T30 screw)
3. Worm clamp from silicone coupler to intake tube (UH048-IN2, requires 7mm socket)
4. Worm clamp from inlet to silicone coupler (UH048-IN2, requires 7mm socket)



24. Install the N75 Solenoid Valve by pushing it up on the Unitronic N75 Relocation Bracket (UH009-IN7) and plug the connectors back.

25. If applicable, install your Unitronic Silicone DV Tube adapter on the DV fitting and tighten it with the provided hose clamp.

26. Using your 7mm, re-check/tighten all of the hose clamps to ensure they've been properly tightened.

27. If you are installing the Unitronic Air Duct (UH057-IN3), locate its specific Hardware Kit.

28. Install the push-on rubber seal (UH020-HW4) onto the air duct.

Tip: *It is recommended to apply a small amount of CA glue to the left end of the seal to ensure it stays firmly in place.*

29. Using a 2.5mm Allen wrench, secure the Unitronic Air Duct (UH057-IN3) to the intake system with the included screws (UH011-HW1) and washers (UH004-HW3).



30. Reinstall your engine cover.

CONGRATULATIONS!
You have successfully installed Unitronic's 5" Intake System!

*Unitronic is unable to guarantee perfect fitment with other Turbo Inlet Elbows due to their potential alignment differences



GETUNITRONIC.COM

13

QUESTIONS OR CONCERNS? CALL US TOLL-FREE AT 1.866.341.2447 OR EMAIL US AT INFO@GETUNITRONIC.COM