



INSTALLATION INSTRUCTIONS

Unitronic Carbon Fiber Turbo Inlet for B9 S4[®]/S5[®] 3.0TFSI[®] UH044-INA

Unitronic recommends that you read through the entire installation instructions prior to beginning the installation to familiarize yourself with the included components, tools required, and procedures involved with the installation.

DISCLAIMER: Unitronic recommends that a Unitronic Authorized Dealer or other qualified and trained professional should perform the installation of this product.

Unitronic Installation Instructions are also available in digital format, if you prefer. Please visit the corresponding product page for a link to download the digital Installation Instructions.
www.getunitronic.com

It is recommended to confirm all parts are present prior to beginning the installation.

PACKING LIST:

Part Number	Description	Quantity
UH016-IN5	Turbo Inlet for B9 3.0TFSI	1
UH008-IN8	B9 3.0T Inlet Adapter 53mm (Stock Turbo)	1
UH032-IN0	Hardware kit for B9 S4/5 Inlet	1

RECOMMENDED TOOLS NEEDED:

- Ratchet
- Wobble Extension
- T30 socket or T30 ball socket
- 90 deg Pick
- 7mm socket
- M4 Ballhead Allen Socket
- Silicone Grease



GETUNITRONIC.COM

1

QUESTIONS OR CONCERNS? CALL US TOLL-FREE AT 1.866.341.2447 OR EMAIL US AT INFO@GETUNITRONIC.COM

1. Begin by removing the engine cover by pulling up on all 4 corners to release the rubber grommets.



Fig.1

2. Using a 90 degree pick tool, release the wiring harness clips from the factory turbo inlet's plastic tabs. Also using the pick, gently release the PCV connection on the right side of the inlet and unplug the hose.



Fig.2

3. Take the 7mm socket and loosen the hose clamp connecting the inlet to the intake box.



Fig.3

4. Using the 90-degree pick tool, release the lower clipped hose from the inlet.



Fig.4

5. Using a ballhead T30 torx or a wobble extension and T30 torx socket, loosen the two bolts holding the turbo inlet onto the turbo housing and remove the inlet from the engine.



Fig.5

6. Locate the Turbo Inlet Adapter Ring (UH008-IN8) and the Hardware Kit (UH032-IN0) and install the included O-rings into the Turbo Inlet Adapter grooves.



Fig.6

7. Locate the Turbo Inlet for the B9 3.0TFSI (UH016-IN5), then lubricate the O-rings on the adapter with silicone grease and carefully install the Inlet Adapter into the turbo inlet as shown.



Fig.7

8. Locate the two remaining M6 bolts from the Hardware Kit (UH032-IN0), mount the Unitronic Turbo Inlet into place and clip on the lower hose before installing the bolts.

9. Using the M6 bolts provided and the M4 Ballhead Allen socket, install the top and bottom bolts and torque to 8Nm.



Fig.9-A

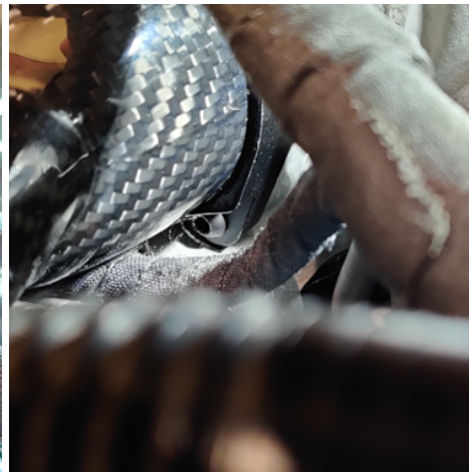


Fig. 9-B

10. Reinstall the rubber inlet coupler, tighten the hose clamp with the 7mm socket and clip the PCV line onto the right side of the Unitronic Turbo Inlet. Reinstall the wiring harness clips onto the turbo inlet as well.



Fig.10

11. Finally, reinstall the engine cover.

CONGRATULATIONS! You have successfully installed your Unitronic Carbon Fiber Turbo Inlet!